



ChemSet™

OPTIMUM ANCHORING SOLUTIONS™



View our products online fast.

For more information on our products go to www.ramset.co.nz or call 0800 726 738

Introduction to ChemSet™

Ramset® ChemSet™ offers a comprehensive range of Premium chemical anchoring systems trusted across construction projects. Designed for both everyday jobs and the most demanding structural applications, the ChemSet™ range combines reliability, performance, and versatility

System Overview

ChemSet™ product families include:

- Injection Adhesives
- Anchor Studs
- Capsules
- Application Tools & Kits
- Accessories for Hollow Masonry



Selection Guide

	Pure Epoxy	Vinyl Ester	Polyester		Capsule
	ChemSet™ EPCON G5™ Xtrem™	ChemSet™ 801XC² Xtrem™	ChemSet™ 101	Ultrafix Plus	ChemSet™ MAXIMA™
Threaded Rod Size Range	M10 - M30	M8 - M30	M8 - M24	M8 - M24	M10 - M24
Rebar Size Range	Ø10 - Ø40	Ø8 - Ø32	Ø8 - Ø24	Ø8 - Ø24	N/A
Installation Temperature Range (°C)	5°C - 40°C	5°C - 40°C	5°C - 40°C	5°C - 40°C	0°C - 35°C
Working Time Minutes @ 20°C	22 mins	15 mins	6 mins	6 mins	N/A
Loading Time Hours @ 20°C Dry or Damp	7 hours	2 Hours	50 mins	50 mins	20min
Loading Time Hours @ 20°C Flooded or Underwater	14 hours	4 hours	50 mins	50 mins	40min
Indicative Load Ranking (Dry and Damp)	★★★★★	★★★★★	★★★★	★★★★	★★★★☆
Seismic rating	For seismic range covered refer to technical assessments	For seismic range covered refer to technical assessments	N/A	N/A	N/A
Hole Condition	 	 	 	 	
Substrate			 	 	
Anchoring Environment	 	For Rebar only 	For Anchor Studs only 	For Anchor Studs only 	
Approvals	ETA 25/0646 ETA 25/0647 ETA 25/0648 ETA 25/1058	ETA 18/0045 ETA 18/0154	ETA 13/0681	ETA 13/0681	ETA 18/0197

OPTIMUM ANCHORING SOLUTIONS™

ChemSet™ EPCON™ G5 XTREM™

HIGH-STRENGTH ANCHORING FOR STRUCTURAL CONFIDENCE

ETA-certified and fire-rated, this high-performance epoxy is engineered for Seismic C2 applications. With a 7-hour cure time at 20°C for same-day loading and a 24-month shelf life, it delivers strength, safety, and flexibility for critical, time-sensitive projects.

Features & Benefits

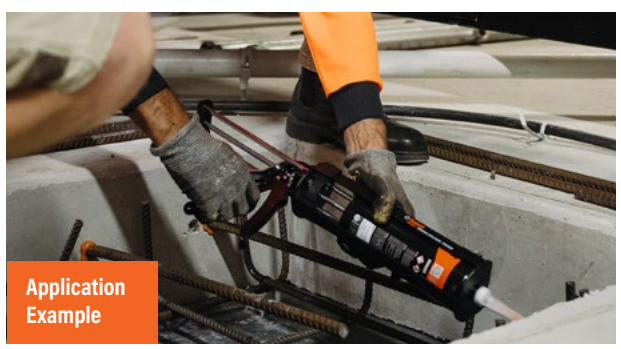
- Made in Australia, supporting faster lead times and reliable supply
- Versatile Use, certified for use in cracked and non-cracked concrete
- All-Weather Performance in dry, wet, and flooded holes
- Fire Rated
- Excellent temperature and chemical resistance.
- Extended Working Time
- 100-year Working Life



Technical Data	
Property	Specification
Adhesive Type	Pure Epoxy
Application Substrates	Cracked & Uncracked concrete
ETA Approved	Yes
Working Time (20°C)	22 minutes
Cure Time (20°C)	7h
Cartridge Sizes	600 ml
Installation Temp Range	5°C to +40°C



Item Code	Description	Pack Qty
CEG5X600	ChemSet™ EPCON™ G5 XTREM™	12



Application Example

OPTIMUM ANCHORING SOLUTIONS™

ChemSet™ 801 XC² XTREM™

HEAVY DUTY VINYL ESTER ADHESIVE

ChemSet™ 801 XTREM XC² is a fast setting Heavy Duty Vinyl Ester Adhesive. Its premium high-strength formulation is certified for seismic performance, flooded conditions, and fire resistance. It is ideal for applications requiring fast assembly times such as structural steel, hand rails & balustrades

Features & Benefits

- ETA-approved for use in cracked concrete and seismic conditions
- Performs in wet, flooded, or overhead holes
- High chemical and temperature resistance
- Fire rated
- 100 Year working life for rebar only (PIR)

BOND STRENGTH
★★★★☆
PREMIUM



Technical Data

Property	Specification
Adhesive Type	Vinyl Ester
Application Substrates	Cracked & Uncracked concrete
ETA Approved	Yes (Seismic C1/C2)
Working Time (20°C)	15 minutes
Cure Time (20°C)	2 hours
Cartridge Size	380ml, 600ml
Installation Temp Range	5°C to +40°C



Item Code	Description	Pack Qty
C801X380	ChemSet™ 801 Xtrem™ XC2 (380ml)	20
C801X600	ChemSet™ 801 Xtrem™ XC2 (600ml)	12



Application Example

OPTIMUM ANCHORING SOLUTIONS™

ChemSet™ 101 PLUS

MULTI-PURPOSE POLYESTER ADHESIVE

A general-purpose polyester adhesive ideal for light-to-medium duty fixings in masonry and concrete. It's quick to apply, fast to cure, and suitable for solid and hollow base materials.

Features & Benefits

- Multi Purpose – Solid and hollow substrates
- Fast Cure – 50 minutes at 20°C
- Fast and Easy Cold Weather Dispensing
- 100 Year Working Life for anchor studs only
- Dry, wet and flooded holes approved

BOND STRENGTH
★★★★☆
UNIVERSAL



Technical Data

Property	Specification
Adhesive Type	Polyester
Application Substrates	Concrete, brick, hollow block
ETA Approved	Yes
Working Time (20°C)	6 minutes
Cure Time (20°C)	50 minutes
Cartridge Size	380ml, 600ml
Installation Temp Range	+5°C to +40°C



Item Code	Description	Pack Qty
C101C	ChemSet™ 101 PLUS Cartridge (380ml)	20
C101S	ChemSet™ 101 PLUS Cartridge (600ml)	12
ISKP	ChemSet 101 PLUS Cartridge (380ml x 2)	10



Application Example

OPTIMUM ANCHORING SOLUTIONS™

UltraFix PLUS

MULTI-PURPOSE POLYESTER ADHESIVE

Ramset UltraFix PLUS is a general purpose, fast setting marine grade polyester in a convenient caulking cartridge suitable for standard caulking guns.

UltraFix PLUS is a certified anchoring solution for threaded rod and reinforcing bar in solid concrete and hollow masonry, ideal for securing steel and timber fixtures.

Features & Benefits

- Multi-Purpose Polyester Adhesive
- Fits standard silicone caulking gun
- Great for small jobs or around the home - Steel fencing, gates, brackets, hinges, guard rails, hand rails and more



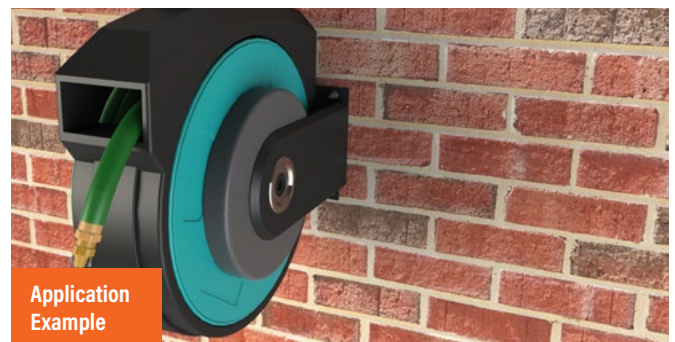
BOND STRENGTH
★★★★☆
UNIVERSAL

Technical Data

Property	Specification
Adhesive Type	Polyester
Application Substrates	Concrete, brick, hollow block
Cartridge Size	300ml
ETA Approved	Yes
Working Time (20°C)	6 minutes
Cure Time (20°C)	50 minutes
Installation Temp Range	+5°C to +40°C



Item Code	Description	Pack Qty
UFP300P	UltraFix Plus 300ml	12
R019179	UltraFix Plus 300ml	4



Application Example

OPTIMUM ANCHORING SOLUTIONS™

ChemSet™ Maxima™ Spin Capsules

PRECISION ANCHORING WITH SPEED AND SIMPLICITY

ChemSet™ Maxima Spin Capsules are a heavy duty, acrylic capsule anchor of a measured dose to suit ChemSet™ Anchor Studs. Simply drill, insert, and spin. Ideal for repetitive or overhead anchoring applications.

Features & Benefits

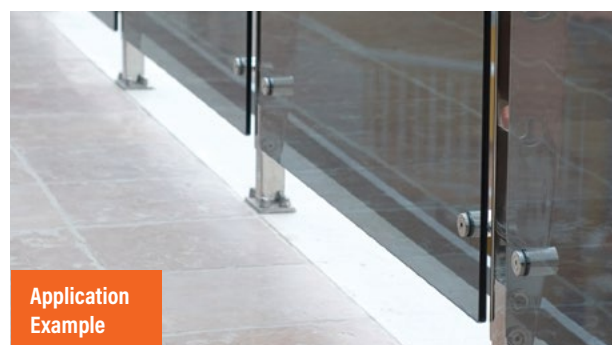
- Pre-measured capsules for controlled dosing
- ETA Certified for fast loading time in dry, wet and flooded holes.
- One fixing per capsule - no wasted adhesive
- No mixing, no mess, no waste
- Rapid 20 minute cure (at 20°C)

Technical Data

Property	Specification
System Type	Glass Capsule
Adhesive Type	Epoxy acrylate
Application Substrates	Solid concrete
ETA Approved	Yes
Set Time (20°C)	20 minutes
Available Sizes	M10 to M24



Item Code	Description	Pack Qty
CHEM10	M10	10
CHEM12	M12	10
CHEM16	M16	10
CHEM2024	M20 & M24	6



Application
Example

OPTIMUM ANCHORING SOLUTIONS™

ChemSet™ Anchor Studs

ENGINEERED FOR SECURE, STRUCTURAL FIXINGS

ChemSet™ Anchor Studs are precision-manufactured from quality Grade 5.8 carbon steel to achieve high tensile and shear capacities. Available in a range of materials and sizes, they provide strong, consistent anchoring for a wide variety of fixings.

Features & Benefits

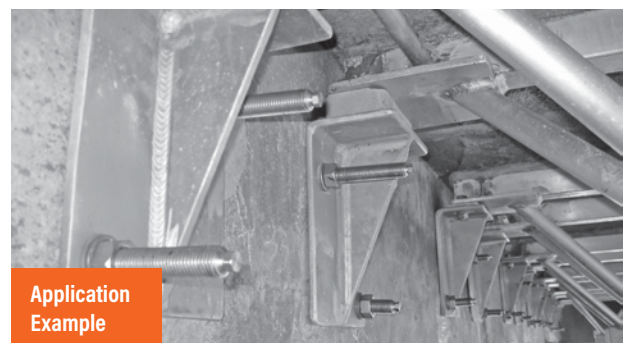
- Made from quality Grade 5.8 carbon steel
- Depth set mark to ensure correct embedment
- Chisel-ended to prevent unthreading
- Supplied with washer and nut
- Available in Hot Dipped Galvanised and Stainless Steel
- Optimised lengths for deeper embedments
- Ideal for use with ChemSet™ adhesives and capsules



Technical Data

Property	Specification
Material Grades	Zinc Plated, Hot Dipped Galvanised, Stainless Steel 316
Thread Type	Metric coarse
Available Diameters	M8 to M24
Length Range	110 mm to 300 mm
Washer/Nut Supplied	Yes
Applications	With ChemSet™ adhesives or capsules

Item Code	Anchor Size (mm)	Anchor Length (mm) x Thread Size	Pack Qty
CS12160	12	160 x M12	10
CS16190	16	190 x M16	10
CS20260	20	260 x M20	6
CS24300	24	300 x M24	6
CS08110GH	8	110 x M8	10
CS10130GH	10	130 x M10	10
CS12160GH	12	160 x M12	10
CS16190GH	16	190 x M16	10
CS20260GH	20	260 x M20	6
CS24300GH	24	300 x M24	6
CS08110SS	8	110 x M8	10
CS10130SS	10	130 x M10	10
CS12160SS	12	160 x M12	10
CS16190SS	16	190 x M16	10
CS20260SS	20	260 x M20	6
CS24300SS	24	300 x M24	6



Application Example

OPTIMUM ANCHORING SOLUTIONS™

ChemSet™ Premium Wire Brushes

BOND TO CONCRETE, NOT CONCRETE DUST

Our Premium Modular Hole Cleaning Brush makes sure every hole is cleaned properly, removing dust and debris for maximum chemical bond strength. Designed for real job sites, this brush has a modular design, a comfortable handle, easy replacement parts and the option to extend for deep holes

Features & Benefits

- Modular extensions for deep holes
- Ergonomic handle for comfortable, all-day operation
- Compatible with stud sizes from M8 to M24
- Hex design fits standard drill chuck for powered cleaning

Part Number	Description	Drilled Hole Diameter
HCPMB11	Wire Brush 11mm	10mm
HCPMB13	Wire Brush 13mm	12mm
HCPMB15	Wire Brush 15mm	14mm
HCPMB19	Wire Brush 19mm	18mm
HCPMB24	Wire Brush 24mm	22mm
HCPMB30	Wire Brush 30mm	26mm
HCPMHE	Handle & Extension	-
HCPMKIT	Brush Kit (15mm & 19mm heads)	-



Application Example

OPTIMUM ANCHORING SOLUTIONS™

ChemSet™ High Volume Hole Cleaning Pump

HOLE CLEANING

The ChemSet™ High Volume Hole Cleaning Pump allows for optimum dust and debris removal from holes, necessary to obtain full adhesion and load capacity from Chemical Anchors.



Item Code	Description	Pack Qty
HCPHV	Hole Cleaning Pump (High Volume)	1

ChemSet™ Hole Cleaning Pump

HOLE CLEANING

The ChemSet™ Hole Cleaning Pump allows for cleaning dust and debris from holes. Use after drilling to ensure full adhesion and load capacity from chemical anchors.



Item Code	Description	Pack Qty
HCPH	Hole Cleaning Pump	1

ChemSet™ Hole Cleaning Brushes

HOLE CLEANING

Cleaning dust and debris from holes is necessary to obtain full adhesion and load capacity from Chemical Anchors.



Item Code	Description	Drill size (mm)	Pack Qty
HCBT13	Hole Cleaning Brush	8-12	1
HCBT20	Hole Cleaning Brush	16-20	1
HCBT26	Hole Cleaning Brush	20-24	1

OPTIMUM ANCHORING SOLUTIONS™

ChemSet™ 18V Powered Applicator

ALL-PURPOSE DISPENSING TOOL

The powerful Ramset Lithium Ion cordless applicator is ideal for effortless dispensing of all Ramset chemical injection products.

Features & Benefits

- Fits all Ramset ChemSet chemical anchor cartridges
- Variable speed trigger for enhanced control
- Robust all metal gear system



Technical Data

Property	Specification
Compatible Sizes	380ml, 600ml & 750ml Ramset cartridges
Mixing Ratio	10:1 & 2:1
Battery Pack	18V / 4.0Ah Li-ion
Compatible Battery & Charger	Milwaukee M18 18 batteries and battery chargers to suit

Item Code	Description	Pack Qty
CUAR18	Chemset™ 18V Powered Applicator	1

ChemSet™ Universal Applicator

ALL-PURPOSE DISPENSING TOOL

This heavy-duty applicator gun is compatible with all ChemSet™ cartridge sizes and ratios. Ideal for repeated use across adhesive types.

Features & Benefits

- Compatible with 380ml, 600ml & 750ml cartridges
- Supports 10:1 & 2:1 mixing ratios
- Ergonomic design with strong trigger mechanism



Technical Data

Property	Specification
Compatible Sizes	380ml, 600ml & 750ml Ramset Cartridges
Mixing Ratio	10:1 & 2:1
Construction	Metal frame
Reusable	Yes

Item Code	Description	Pack Qty
CUAP	Chemset™ Universal Applicator	1

OPTIMUM ANCHORING SOLUTIONS™

ChemSet™ Mixing Nozzles

CHEMSET DISPENSING

ChemSet™ Injection System Mixing Nozzles contain a static mixing element specifically designed to ensure correct and complete mixing of Ramset™ ChemSet™ Injection adhesives. ChemSet™ Chemical Anchoring must be used exclusively with ChemSet™ mixing nozzles.

Features & Benefits

- Kit includes 5 x Nozzles and 5 x Extensions
- Always use recommended mixing nozzles for each adhesive.
- Using the correct nozzle ensures proper mixing and optimum load resistance.



Item Code	Description	Pack Qty
ISNE	Mixing Nozzles 240mm, 425 mm with Extension	5

ChemSet™ Anchoring Kit

COMPLETE ONSITE SOLUTION

The ChemSet™ Anchoring Kit contains all the essentials for proper installation of Ramset chemical anchors.

Contents

- Kit contains the ChemSet Universal Applicator, hole cleaning pump and 3x hole cleaning brushes
- Contained in a tough jobsite bag suitable for carrying threaded studs and chemical anchoring adhesives
- Brushes suitable for all hole sizes



Technical Data	
Property	Specification
Contents	ChemSet Universal Applicator, hole cleaning pump and 3x hole cleaning brushes
Best Use	Starter kit or site-ready pack
Compatible Adhesives	101 PLUS, Reo 502™ Xtrem™, 801 Xtrem™

Item Code	Description	Pack Qty
CHEMKITBAG	Tool bag, CUAP, HCPHV, HCBT13, HCBT20, HCBT26	1

OPTIMUM ANCHORING SOLUTIONS™

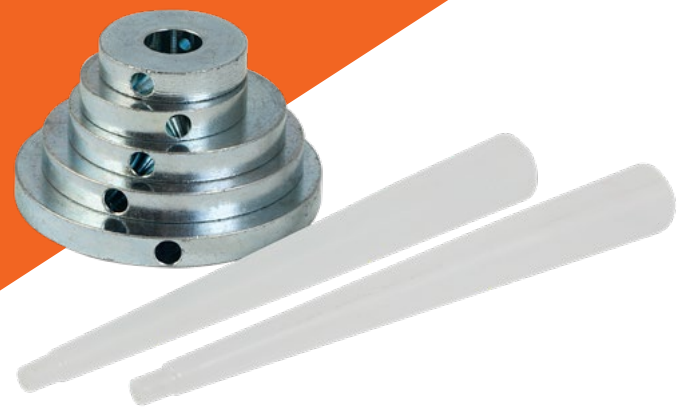
ChemSet™ Annular Gap Washer

OPTIMISE LOAD TRANSFER

ChemSet™ Annular Gap Washers are used to fill the annular gap with chemical adhesive. This ensures an even load distribution across multiple anchor base plates, increasing the seismic and static shear load performance of chemical and mechanical anchors.

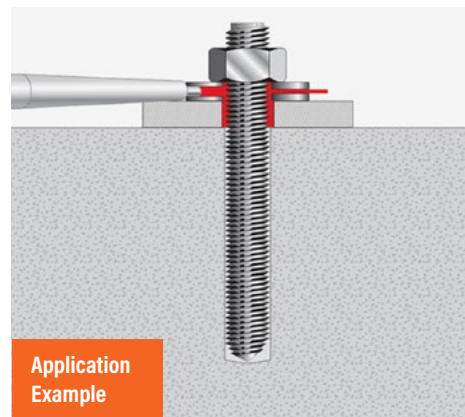
Features & Benefits

- Increases steel fixture shear capacity by evenly distributing load
- Patented dual port washer ensuring complete annular gap filling
- Easy fit nozzle for no leakage
- Double standard zinc coating thickness for enhanced corrosion protection



Technical Data	
Property	Specification
Material	10um Zinc Plate
Compatible Stud Sizes	M10, M12, M16, M20, M24
Outer Diameter	26mm to 48mm
Installation	Placed under nut before torquing

Technical Data				
Part Number	Internal Diameter	External Diameter	Additional Fixture thickness	Coating
AGWM10WN	12 mm	26 mm	5 mm	10um Zinc Plate
AGWM12WN	14 mm	28 mm	5 mm	10um Zinc Plate
AGWM16WN	17 mm	34 mm	5 mm	10um Zinc Plate
AGWM20WN	21 mm	41 mm	5 mm	10um Zinc Plate
AGWM24WN	25 mm	48 mm	5 mm	10um Zinc Plate



OPTIMUM ANCHORING SOLUTIONS™

Overhead & Deep Hole Injection Kit

ENSURES PERFECTLY FILLED HOLES

The ChemSet™ Overhead & Deep Hole Injection Kit is essential for ensuring the effective application of chemical adhesive in challenging conditions, such as deep or overhead holes. By completely filling the hole and preventing air pockets that can weaken the bond, it significantly improves the load capacity of the fixing.

Features & Benefits

- Six cut to size options - simply trim to suit
- Sizes 15, 18, 20, 25, 32 & 40mm
- Clear sizing indicators for accurate use
- Ensures complete hole filling with no air pockets
- Assists in metering the correct adhesive dosage
- Piston plugs are required by most ETAs, and this system ensures easy compliance



Item Code	Kit Includes	Suits Hole Diameter (mm)	QTY
ISPH	Piston Plugs x 5. 10mm Tubing x 3m	15, 18, 20, 25, 32 & 40	1

Hollow Brick & Block Anchoring Accessories

RELIABLE ANCHORING IN HOLLOW SUBSTRATES

These accessories ensure secure, reliable anchoring in hollow or perforated masonry. Mesh and plastic sleeves retain resin and provide strong adhesive bonding inside hollow cavities.

Features & Benefits

- Creates a solid adhesive plug for studs or threaded rods
- Prevents resin loss in hollow materials
- Simplifies installation in cavity substrates



Item Code	Description	Suits
MFSKT55799	MULTIFIT SIEVE 4PK	M8 & M10 Studs

Resources Hub

Looking for technical information, or useful tools to assist in specification? We have all the information you need to complete your project and make sure the paperwork is in order. Access helpful software and calculators, download relevant safety data sheets (SDS), brochures, catalogues, manuals, test reports and certificates for Ramset products.



Specifiers Anchoring Resource Book



iExpert Anchor Design Software



ChemSet™ Cartridge Volume Calculator



Ramset™ | Ramset Drive, Chirnside Park 3116

Information in this document is correct at the time of printing. Readers should contact Ramset™ or consult Ramset™ detailed technical information to ensure product is suitable for intended use prior to purchase.

ITW Australia Pty Ltd ABN 63 004 235 063 trading as Ramset™

© Copyright 2026.™ Trademarks of Cetram Pty Ltd. Used under license by Ramset™

Important Disclaimer: Any engineering information or advice ("Information") provided by Ramset™ in this document is issued in accordance with a prescribed standard, published performance data or design software. It is the responsibility of the user to obtain its own independent engineering (or other) advice to assess the suitability of the Information for its own requirements. To the extent permitted by law, Ramset™ will not be liable to the recipient or any third party for any direct or indirect loss or liability arising out of, or in connection with, the Information.

Contact & Support

For technical advice, product data, or system selection help, reach out to your local Ramset® representative or visit us online.

Australia: www.ramset.com.au | 1300 RAMSET

New Zealand: www.ramset.co.nz | 0800 RAMSET

Scan your region's QR code below for more info or to contact us directly.



ramset.com.au



ramset.co.nz