

Hollow Wall Anchors

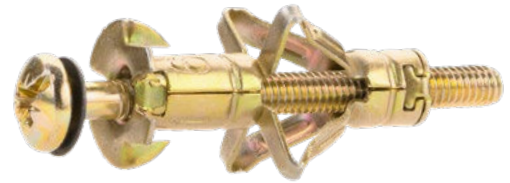
MATERIAL	INSTALLATION RELATED	INSTALLATION TOOL
		<p>SETHWG</p>

Description

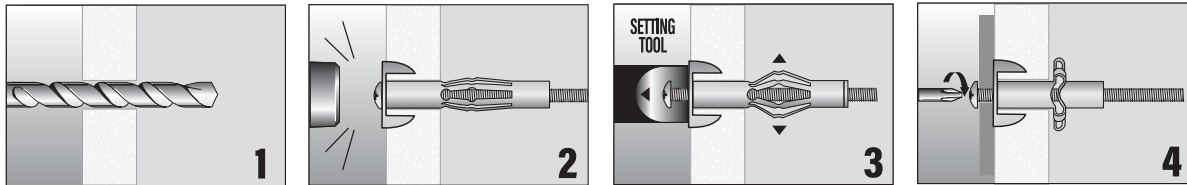
The Ramset™ Hollow Wall Anchor is an all metal, light duty, cavity fixing for plasterboard and other hollow wall materials up to 16mm.

Features & Benefits

- The Hollow Wall Anchor's low-profile head allows for flush finishing.
- The anchor's large flange prevents the head from pulling into the substrate.
- Collapsing legs with an integral nut provide high strength and allow the screw to be removed without losing the anchor inside the cavity.
- For fast, consistent installation use Ramset Hollow Wall Anchor Setting Tool (SETHWG)



Installation



1. Drill the correct size hole into the substrate (refer to the table below).
2. Tap the anchor into the hole until it's flush with the surface of the substrate.
3. Attach the Ramset™ Hollow Wall Anchor – setting tool to the head of the screw. Squeeze the trigger to expand the anchor. (refer to table below)
4. Remove the screw and place it through the fixture then back into the anchor. Tighten the screw until the fixture is fixed.

Family	SKU	Pack Qty	Required Screwdriver	Drill Diameter (mm)	Fixture Hole (mm)	10mm Plaster		13mm Plaster		16mm Plaster	
						Shear (kg)	Tension (kg)	Shear (kg)	Tension (kg)	Shear (kg)	Tension (kg)
HW13M4	HW13M4	100	#2 Phillips or (PZ2)	8	4	32	11	44	21	-	-
	HW13M4/10	10				32	11	44	21	-	-
	R719225	4				32	11	44	21	-	-
	R467485 *	2				32	11	44	21	-	-
HW14M5	HW14M5	100	#2 Phillips or (PZ2)	9	5	39	15	60	29	-	-
	HW14M5/10	10				39	15	60	29	-	-
	R934917	4				39	15	60	29	-	-
HW16M6	HW16m6	100	#3 Phillips or (PZ3)	13	6	41	17	63	30	94	42
	HW16M6/20	20				41	17	63	30	94	42
	R934900	4				41	17	63	30	94	42
HW24M4	HW24M4	100	#2 Phillips or (PZ2)	8	4	-	-	-	-	10	10
	R719232	4				-	-	-	-	10	10

*includes one hook per anchor

For further information, please contact Ramset™

AU - PHONE: 1300 780 063 www.ramset.com.au

NZ - PHONE: 1800 RAMSET (726738) www.ramset.co.nz

Ramset™ 1 Ramset Drive, Chirnside Park, Victoria. 3116. Australia © Copyright March 2025 ITW Australia Pty. Ltd. ABN 63 004 235 063 trading as Ramset™

Important Disclaimer: Any engineering information or advice ("Information") provided by Ramset™ in this document is issued in accordance with a prescribed standard, published performance data or design software. It is the responsibility of the user to obtain its own independent engineering (or other) advice to assess the suitability of the Information for its own requirements. To the extent permitted by law, Ramset™ will not be liable to the recipient or any third party for any direct or indirect loss or liability arising out of, or in connection with, the Information.