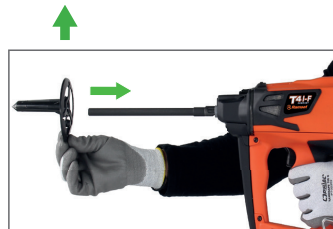
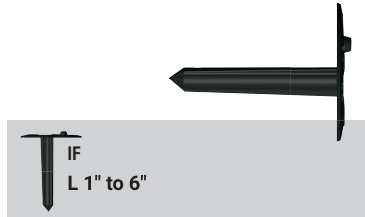


InsulFast™ T4 Compact

OWNERS MANUAL





InsulFast™ T4 Compact Owners Manual



	30%	25 min.
	80%	60 min.
	100%	1h45





$5^{\circ}\text{F} \leq T \leq +120^{\circ}\text{F}$



May need to prime tool 5-8 time prior to first shot. To prime, push down, pull trigger, repeat.

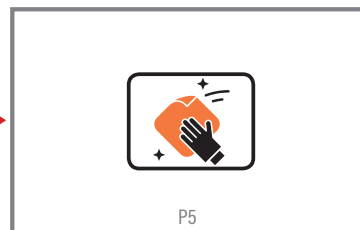
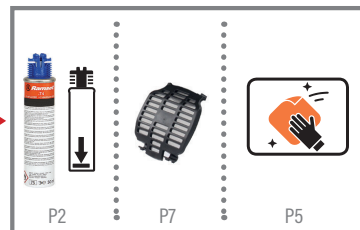
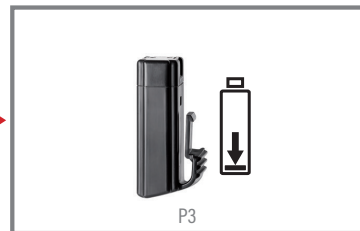
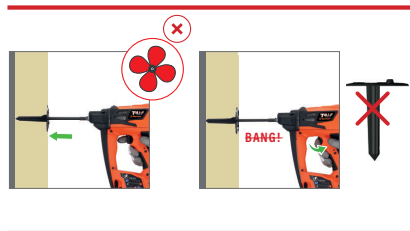
Il peut être nécessaire d'amorcer l'outil 5 à 8 fois avant le premier tir. Pour amorcer, appuyez, tirez sur la gâchette, répétez.

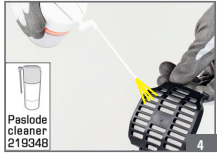
Es posible que deba cebar la herramienta de 5 a 8 veces antes de la primera aplicación. Para cebar, presione hacia abajo, jale el gatillo y repita.

Resting position / Position de repos / Posición de descanso









InsulFast™ T4 Compact Owners Manual



Customer Service

Ramset® Australia

Sales, Orders and Enquiries

Tel: 1300 780 063

Email: enquiry@ramset.com.au

Web: www.ramset.com.au

Ramset® New Zealand

Sales, Orders and Enquiries

Tel: 0800 RAMSET (726738)

Email: info@ramset.co.nz

Web: www.ramset.co.nz

Ramset™ 1 Ramset Drive, Chirnside Park, Victoria, 3116, Australia

In the interests of product improvement, Ramset™ reserves the right to alter product specifications as required. Information included in this product catalogue is correct at time of printing. It is the responsibility of the user to ensure product selected is appropriate for its intended use. For further technical information go to www.ramset.com.au or contact Ramset™ on the numbers indicated. ITW Australia Pty. Ltd. ABN 63 004 235 063 trading as Ramset™ © Copyright 2024 Disclaimer: The information contained in this publication is intended to give a fair description of the products and their capabilities. No responsibility or liability by the manufacturers will be accepted for misuse, misreading or deviation from the recommended guidelines of these products. As new technology is introduced, or industry standards are altered, Ramset™ reserves the right to alter the information without notice.

CB1444PDL