

# OrbiPlate™

## Abian Apartments, Brisbane, Australia



### The Project

Sunland Group have designed and constructed a number of architecturally defying projects across Australia. G James Glass and Aluminium were challenged to implement the conception of the fascinating glass façade around Abian Apartments. The challenge of soffit connections in addition to the millimeter accuracy required, pointed to only one option, the "OrbiPlate™" system."

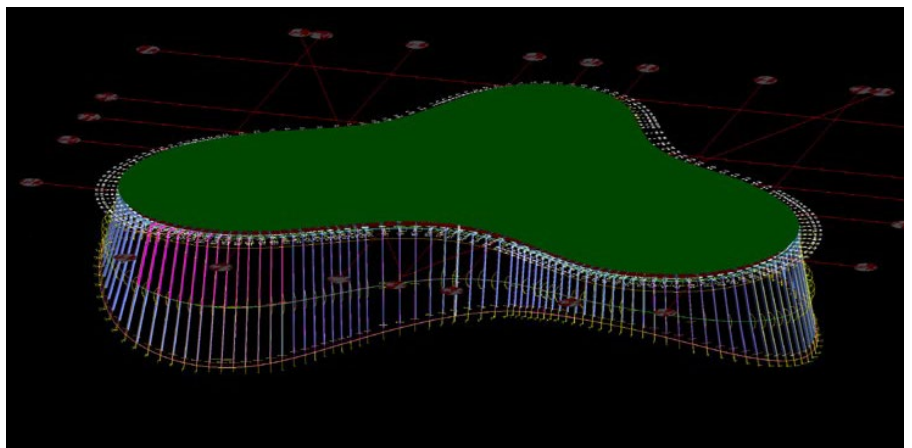
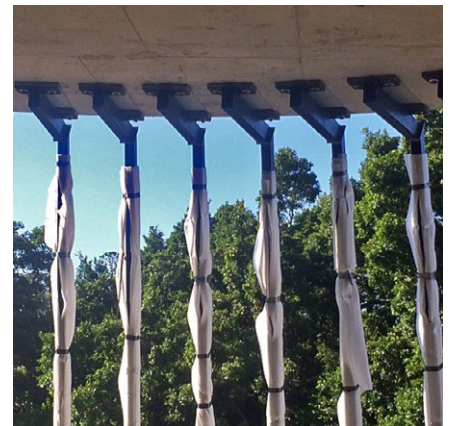
G James Glass and Aluminium approached Ramset™ for assistance, technical literature and CAD Blocks to create tolerance with Elephant Foot™ ferrule connections. OrbiPlate™ allowed 20mm tolerance and eliminated the pain of marking out and installation of post installed anchors.

The placement of each steel member needed to be millimetre perfect to marry up with regular surveyor checks in order to fit the glass panels.

**"I believe using the OrbiPlate™ fixing option was at least 30% quicker than our original design."**

**"OrbiPlate™ provided tolerance in every direction and allowed fabrication of steel to be done without a site measure of the Elephant Foot ferrule locations."**

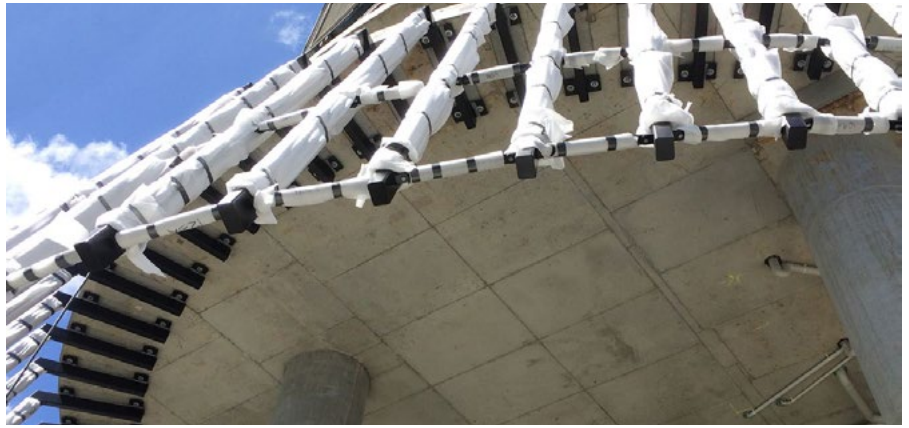
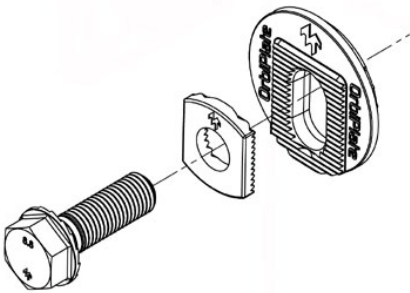
Testimonial from Darshan Naik, G James Glass and Aluminium Project Manager.



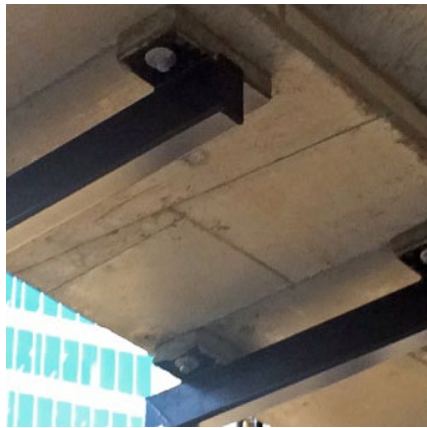
# OrbiPlate™

## Abian Apartments, Brisbane, Australia

Beenleigh Steel Fabrication PTY LTD were responsible for the fabrication & erection of the steelwork, and this was their first exposure to OrbiPlate™.



**“OrbiPlate™ is the best system for use with cast-in ferrules as the location of ferrules is always an issue.”**  
 Testimonial from Darshan Naik, G James Glass and Aluminium Project Manager.



### OrbiPlate™

The patented OrbiPlate™ system delivers connection tolerances of 20mm in any direction to position the main structural M20 bolt. It is comprised of an 80mm main circular washer with an elongated slot surrounded by serrated teeth that provide the effective mechanical lock with a secondary, smaller washer used to position the main structural M20 bolt as required.

For more information,



Watch this video



OrbiPlate™ Web page

**For further information, please contact Ramset™**  
**AU - PHONE: 1300 780 063 [www.ramset.com.au](http://www.ramset.com.au)**  
**NZ - PHONE: 0800 RAMSET (726738) [www.ramset.co.nz](http://www.ramset.co.nz)**

Ramset™ 1 Ramset Drive, Chirnside Park, Victoria. 3116. Australia © Copyright October 2023. ITW Australia Pty. Ltd. ABN 63 004 235 063 trading as Ramset™  
 Important Disclaimer: Any engineering information or advice ("Information") provided by Ramset™ in this document is issued in accordance with a prescribed standard, published performance data or design software. It is the responsibility of the user to obtain its own independent engineering (or other) advice to assess the suitability of the Information for its own requirements. To the extent permitted by law, Ramset™ will not be liable to the recipient or any third party for any direct or indirect loss or liability arising out of, or in connection with, the Information.